

# BALL SCREW SUPPORT BEARINGS

## SELECTION GUIDE - FIXED SUPPORT SIDE



Ball screw support bearings facilitate accurate positioning of a work piece or machine component quickly and efficiently. The ability to support axial forces with accuracy and rigidity, to contend with prevailing operating environments, and to deliver ease of design and installation are important considerations in selecting ball screw support bearings.

To that end, NSK offers a wide range of solutions designed to meet the specific and unique requirements of machine designers and operators:



### WBK-TYPE BEARING UNITS

Integrated, ready-to-install and highly dust-resistant assemblies

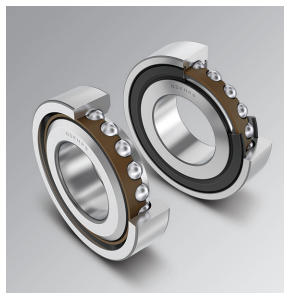
- › Simplify support-side screw design
- › Preload-controlled
- › Available in high speed, heavy duty types with duplex (DF), triplex (DFD) and quadruplex (DFF) arrangements



### NSKHPS BSBD SERIES

A double row configuration that supports large axial forces in both directions

- › BSN series bearings, and ready-to-mount flanged BSF series
- › Available as matched pairs (DT) and heavy-duty types
- › Contact seal, suitable for high speeds



### NSKHPS TAC C SERIES

High rigidity single row bearings designed specifically for machine tool applications

- › Universal matching for infinite combinations to achieve required rigidity and life requirements
- › Available with light-contact (DDG) seal, prepacked with water-proof grease

For ball screw support bearing availability by series and selection for ball screw shaft diameters, refer to page 2.

CONTACT NSK ▶

# BALL SCREW SUPPORT BEARINGS

## SELECTION GUIDE - FIXED SUPPORT SIDE



Screw Shaft Diameter (mm)	Bearing Journal Diameter (mm)	FIXED END SUPPORT BEARINGS FOR PRECISION GROUND BALL SCREWS				
		Housed Units		Ready-to-Mount	Bearings Only	
<b>d</b>	<b>d<sub>1</sub></b>	WBK / WBK-DF (D,F)		BSF (DT) *	BSN (DT) *	TAC C (DDG) **
10	8	WBK08-01A	WBK08-11	--	--	--
12	10	WBK10-01A	WBK10-11	--	--	--
14	12	WBK12-01A	WBK12-11	BSF1255	BSN1242	--
15	12	WBK12-01A	WBK12-11	BSF1255	BSN1242	--
16	12	WBK12-01A	WBK12-11	BSF1255	BSN1242	--
20	15	WBK15-01A	WBK15-11	BSF1560	BSN1545	15TAC47C (DDG) **
	17	WBK17DF(D,F)-31H		BSF1762 (-DT)	BSN1747 (-DT)	
25	20	WBK20-01	WBK20-11	BSF2068 (-DT)	BSN2052 (-DT)	20TAC47C (DDG) **
	20	WBK20DF(D,F)-31H				
28	20	WBK20-01	WBK2011	BSF2068 (-DT)	BSN2068 (-DT)	20TAC47C (DDG) **
	20	WBK20DF(D,F)-31H				
32	25	WBK25-01W	WBK25-11	BSF2575 (-DT)	BSN2557 (-DT)	25TAC62C (DDG) **
	25	WBK25DF(D,F)-31H				
36	30	WBK30DF(D,F)-31H		BSF3080 (-DT)	BSN3062 (-DT)	30TAC62C (DDG)
	30	--		BSF30100 (-DT) *	BSN3072 (-DT) *	
40	30	WBK30DF(D,F)-31H		BSF3080 (-DT)	BSN3062 (-DT)	30TAC62C (DDG)
	30	--		BSF30100 (-DT) *	BSN3072 (-DT) *	
45	35	WBK35DF(D,F)-31H		BSF3590 (-DT)	BSN3572 (-DT)	35TAC72C (DDG)
50	40	WBK40DF(D,F)-31H		BSF40100 (-DT)	BSN4075 (-DT)	40TAC72C (DDG)
	40	--		BSF40115 (-DT) *	BSN4090 (-DT) *	40TAC90C (DDG)
55	45	--		--	--	45TAC75C
	45	--		--	--	45TAC100C (DDG)
63	50	--		BSF50115 (-DT)	BSN5090 (-DT)	50TAC100C (DDG)
	50	--		BSF50140 (-DT) *	BSN50110 (-DT) *	
	55	--		--	--	55TAC100C (DDG)
	55	--		--	--	55TAC120C
80	60	--		BSF60145 (-DT)	BSN60110 (-DT)	60TAC120C

**Note:**

- \* Indicates BSF / BSN series Heavy Duty types.
- \*\* Indicates TAC C bearings available with non-contact seal option.
- › Low profile WBK-01B support units are available for NSK Compact FA model ball screws.
- › Clean WBK support units (-01C) available featuring low dust emission grease and low torque bearings.
- › For ball screw support bearing requirements for screw shaft sizes not shown - and for simple support side bearings - contact NSK.

