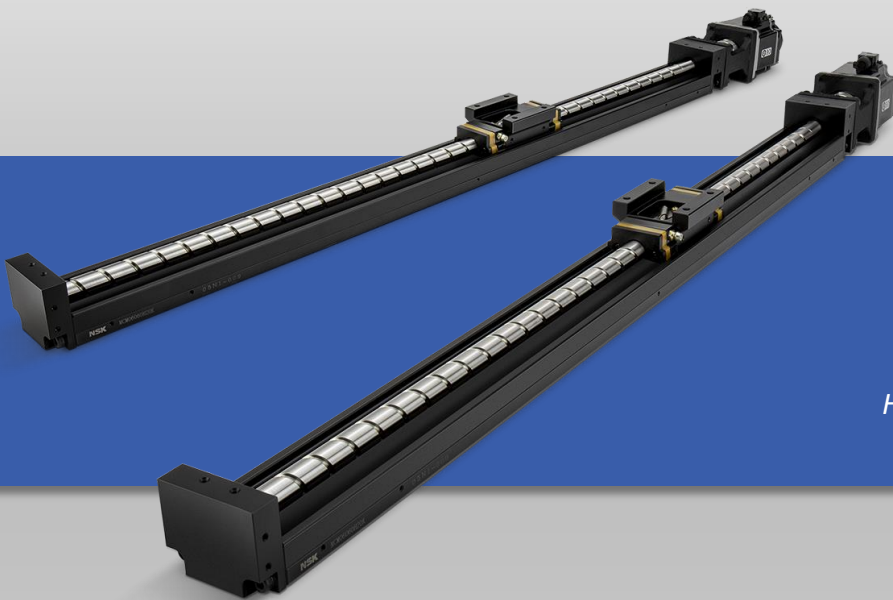


Discover

SANYO DENKI

Motion and Control



NSK

Motorized Actuator *MCE model*

High performance motor with NSK Electrified Monocarrier linear actuator

SANMOTION R

AC SERVO SYSTEMS

High-performance AC servo systems consisting of servo amplifiers with advanced vibration suppression and highly efficient servo motors.

200 VAC input Indexer Amplifier



Parallel IO Model

Modbus Model

MCE Actuator

■ 40 mm sq, 100 W Motor Model

Model Number (Actuator and Motor)	Brake	Lead	Stroke	Max Trust	Max Speed
MCE03015H10K0001SCF		10 mm	150 mm	704 N	830 mm/s
MCE03015H10K0001SDF	✓				

■ 60 mm sq, 200 W Motor Model

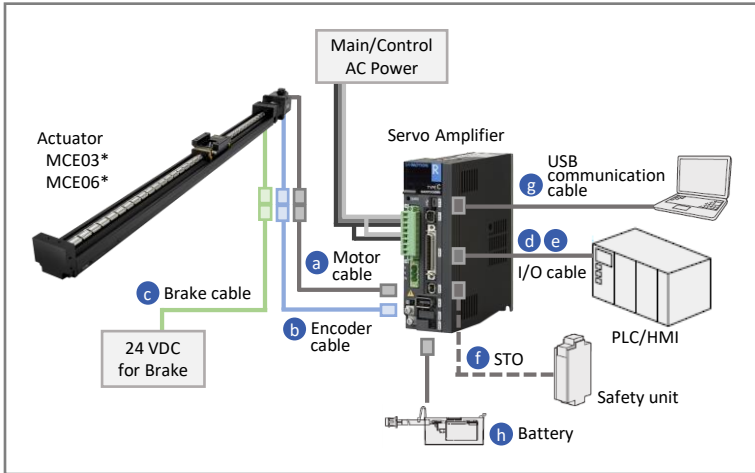
Model Number (Actuator and Motor)	Brake	Lead	Stroke	Max Trust	Max Speed
MCE06030H10K0001SEF		10 mm	300 mm	2626 N	830 mm/s
MCE06030H10K0001SFF	✓				

1.800.905.7989

SANYO DENKI AMERICA, INC.

System Configuration

Parallel IO Model



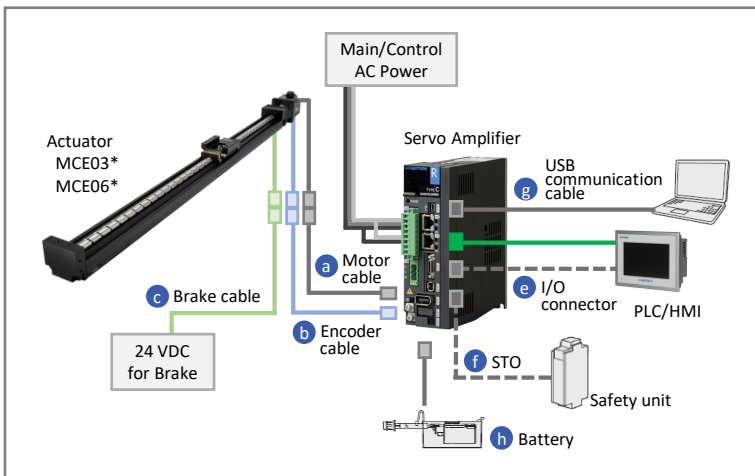
Compatible Amplifier and Accessories

Amplifier	100 W motor	RS3A01A0CA4
	200 W motor	RS3A02A0CA4
Cable	a: Motor: 10ft	MEXTK1810FT
	b: Encoder: 10ft	EEXTKABS2410FT
	c: Brake: 10ft	MEXTBRK2010FT
Accessory	d: I/O cable (both conn): 2 m	QH0-CJ0201-S01
	Terminal Block	QH0-TB001-S01
	e: I/O cable (one side conn): 2 m	QH0-CJ0203-S01
	f: Connector for STO	AL-00718252-01
	g: USB communication cable: 1m	AL-00896515-01
	h: Battery	AL-00880402-01

Customize Options

- Lead: 2, 10, 12 mm
- Stroke: MCE03 model 50 to 250 mm
MCE06 model 50 to 600 mm

Modbus Model



Compatible Amplifier and Accessories

Amplifier	100 W motor	RS3A01A0FA4
	200 W motor	RS3A02A0FA4
Cable	a: Motor: 10ft	MEXTK1810FT
	b: Encoder: 10ft	EEXTKABS2410FT
	c: Brake: 10ft	MEXTBRK2010FT
Accessory	e: I/O connector	AL-00842383
	f: Connector for STO	AL-00718252-01
	g: USB communication cable: 1m	AL-00896515-01
	h: Battery	AL-00880402-01

Customize Options

- Lead: 2, 10, 12 mm
- Stroke: MCE03 model 50 to 250 mm
MCE06 model 50 to 600 mm

Amplifier Specifications



General Specifications

Main circuit power	Three-phase: 200 to 230 VAC +10, -15%, 50/60 Hz ± 3Hz Single-phase: 200 to 230 VAC +10, -15%, 50/60 Hz ± 3Hz
Control circuit power	Single-phase: 200 to 230 VAC +10, -15%, 50/60 Hz ± 3Hz
Speed control range	1: 5000 (internal speed command)
Frequency characteristics	2200 Hz (in case of high-velocity sampling mode)
Allowable load inertia moment	10 times motor rotor inertia moment
Built-in functions	<ul style="list-style-type: none"> • Protection functions (alarm, warning) • Digital operator (status, monitor, alarm, test operation) • Dynamic brake circuit • Regeneration process circuit • Speed monitor (VMON): 2.0 V±10 % (at 1,000 min⁻¹) • Torque (Thrust) (TCMON): 2.0 V±10 % (at 100 %)

Modbus Communication

Protocol	Modbus-RTU
Interface	RS-485 (1:N) <ul style="list-style-type: none"> • Baud rate (bps): 4800, 9600, 19200, 38400, 57600, 115200 • Start bit: 1 • Data length (bit): 8 • Parity: None, even /odd number • Stop bit: 1, 2
Electric specification	Based on RS-485 (half duplex communication)
Connector	RJ-45

Positioning functions

Number of control axis	1 axis
Number of registration points	254 points maximum (Point 000 to 253)
Maximum command value	2,147,483,648 to +2,147,483,647
Command unit	pulse / mm / deg
Quick feeding speed	2,147,483.647 mm/s (at 0.001 mm/pulse selection)
Acceleration/deceleration	Linear or S-shaped (select with parameter)
Point data setting	Numerical input via SANMOTION MOTOR Setup
Move point number setting	Parallel 8 bits (Binary code)
Current limit	0 to 799 % (Rated value: 100 %), should be equal to peak stall current or less.
Software limit	Available
Move mode	Homing/Manual (JOG, 1-step)/Point specification move
Zone signal	8 zone maximum